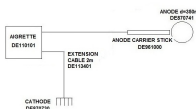
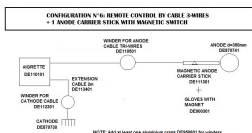


DIFFERENT CONFIGURATIONS

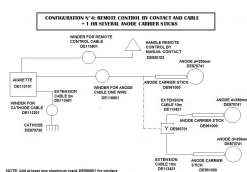
In all configurations, the basic equipment must include the AIGRETTE[®], a cathode cable, a cathode and an anode screwed on an anode carrier stick. The variety of accessories allows fishing with a device type AIGRETTE[®] in 7 different configurations (see synoptic diagrams).



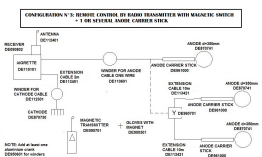
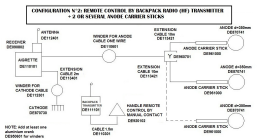
For fisheries within a 100 m radius, must be added to basic configuration, a three wire cable winder of 100 m, a crank for winder, a winfer for cathode cable, gloves with magnet (magnetic gloves), and the anode carrier stick must be equipped with built-in magnetic switch (Configuration #6).



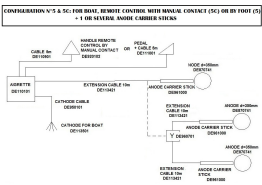
For fisheries within a 180 m radius, we propose a remote control by cable. This system is the most reliable thanks to its hardiness. For that, must be added to the basic configuration, a winder for anode cable and its crank, an handle remote control by manual contact, a winder of 180 m for the remote control, and a winder for cathode cable. Fishing with multiple anodes is possible (Configuration #4).

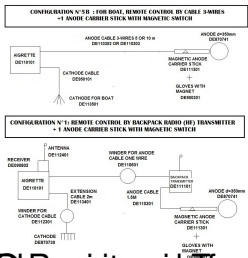


For fisheries beyond 180m, just add the winders for anode cable and for remote control cable, otherwise choose a hertzian coded remote control (Configuration #2 and #3). The remote control is held by an operator who provides safety.



Other configurations are possible, such as fishing by boat (Configuration #5, 5C and 5B) or fishing with one electrode by backpack radio remote control. In this case remote control is directly controlled thanks to the anode carrier stick (Configuration #1). In configuration #1, the fisherman holding the anode carrier stick controls himself the fishing thanks to the built-in magnetic switch.





Registered trademark of Electration DREAM